



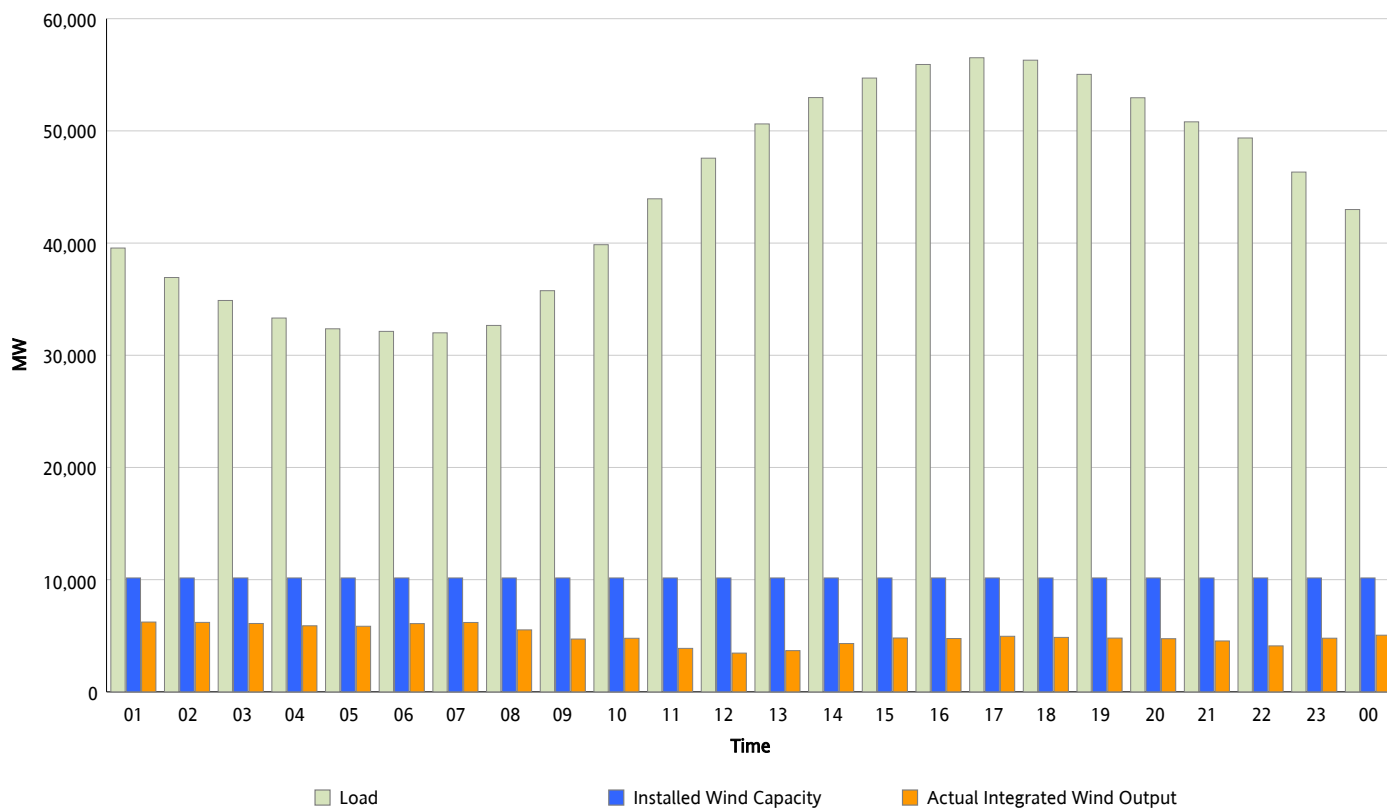
ERCOT Grid Operations

Wind Integration Report : 07/06/2013

Peak Load	56,521 MW
Load Peak Hour (HE)	17
Wind Over Peak	4,955 MW
Wind Record 05/02/13	9,674 MW
Max Wind Value*	6,331 MW
Wind Peak Time	00:28
Wind Integration %	15.99 %

Hourly Average Actual Load vs. Actual Wind Output

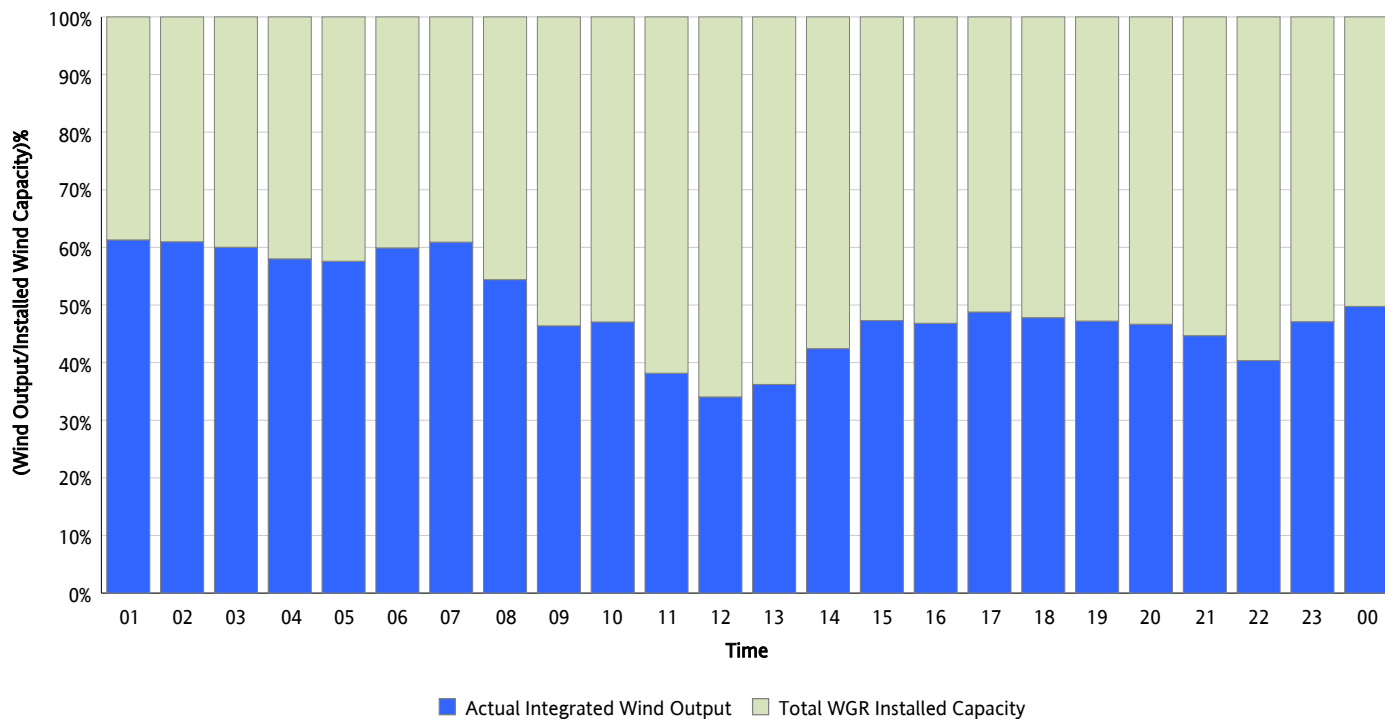
07/06/2013



* Wind Record and Wind Max represent instantaneous values and the rest of the values are integrated over the hour

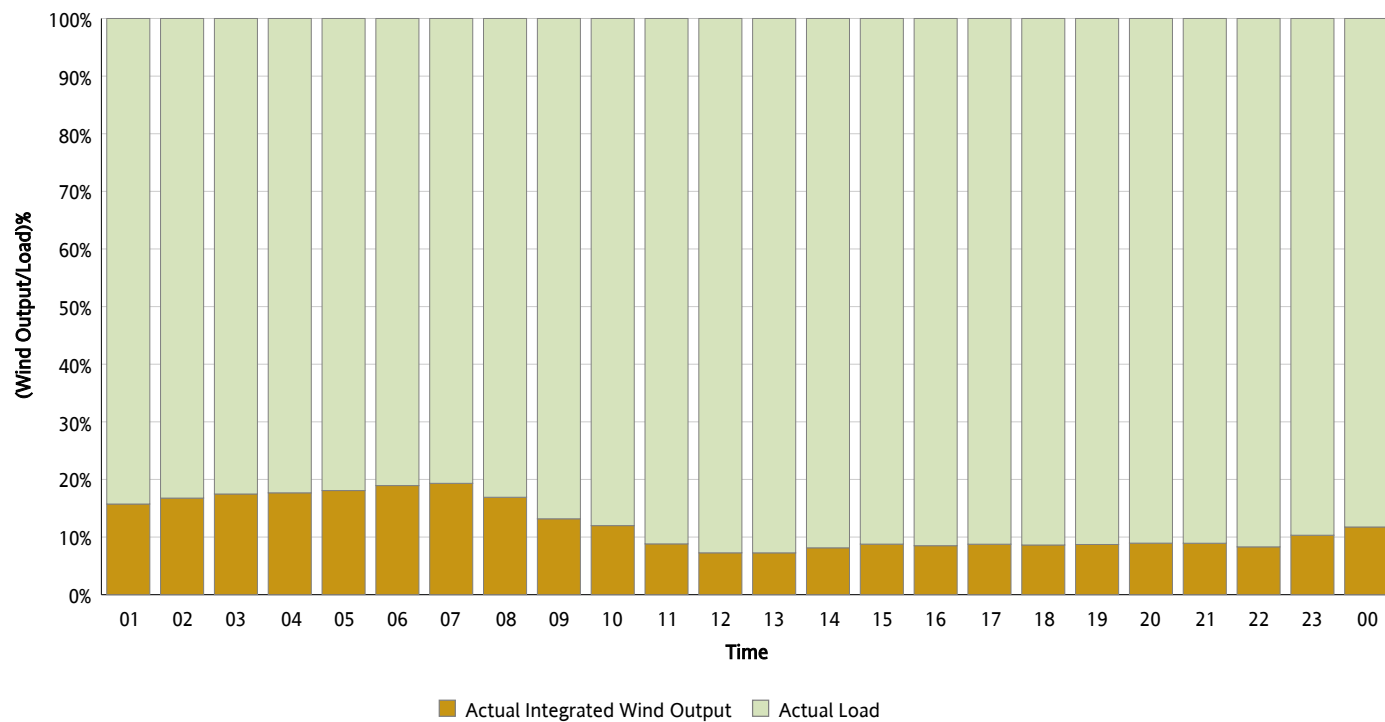
Actual Wind Output as a Percentage of the Total Installed Wind Capacity

07/06/2013



Actual Wind Output as a Percentage of the ERCOT Load

07/06/2013



ERCOT Load vs. Actual Wind Output

06/29/2013 - 07/06/2013

